

## NOTICE TO MARINERS NO. 5/25

Chart BA 1166 Avonmouth to Hock Cliff

West Coast, River Severn

### Severn Estuary – Survey operations

Mariners are advised that survey operations are planned to be carried out in the GHT harbour area by ABPmer on behalf of the Environment Agency.

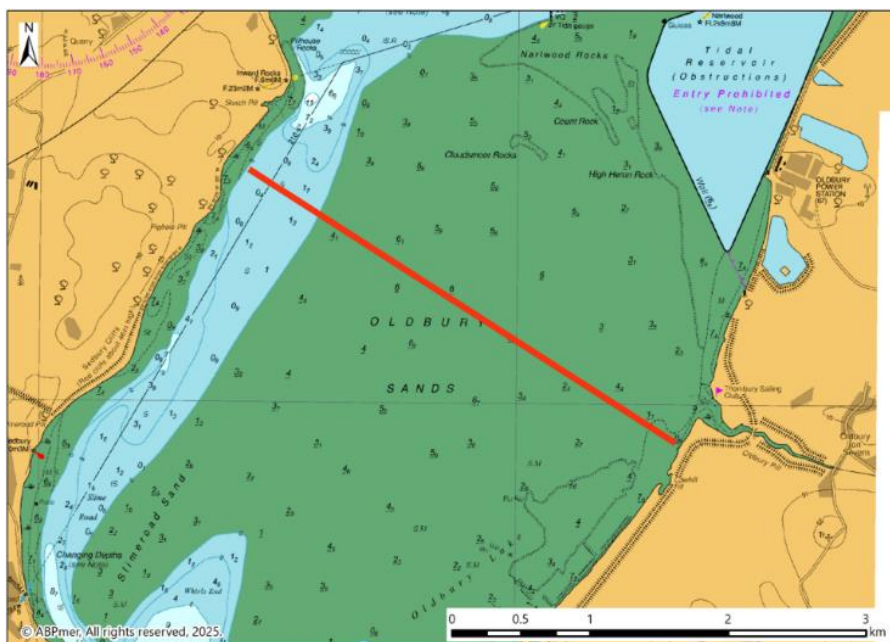
#### Transect survey

A transect survey is planned to be conducted over the neap tide phase for a 13hr period sometime between 25-27<sup>th</sup> March 2025. The survey will be conducted from the vessel *Severn Guardian* (Call sign 2FGL5, MMSI 235091052).

Operations along the transect will be for a 13hr period. The survey vessel will progress along the transect at approximately 1hr intervals (excepting LW period where only what is navigable of the route will be surveyed) and will give way to larger traffic operating in the navigation channel. The vessel will be visible on AIS and will also be contactable on appropriate VHF working channels 13 & 16. Smaller vessels are requested to pass slowly and consider their wash.

Transect start: 051° 38.91083' N / 002° 37.69434' W

Transect end: 051° 37.85221' N / 002° 35.00184' W





Please note that a similar transect survey, utilising the same vessel, will be carried out during the same period 25-27 March further down the Bristol Channel over a route between Clevedon and Goldcliff/Newport. Attention is drawn to Bristol Port Company Local Notice to Mariners No. 06-2025, which refers.

Notices to Mariners may be viewed on the Trustees' website:

[www.gloucesterharbourtrustees.org.uk](http://www.gloucesterharbourtrustees.org.uk)

Owners, Agents and Charterers should ensure that the contents of this Notice are made known to the Masters or persons in charge of their vessels or craft.

S Henderson  
Harbourmaster

24<sup>th</sup> March 2025